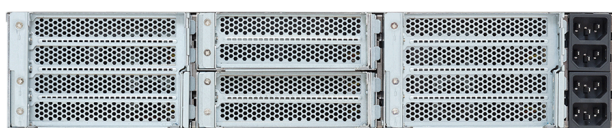
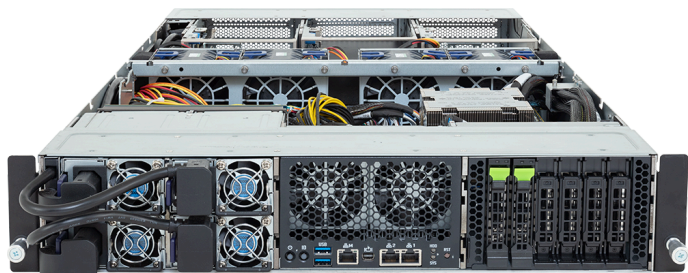


XV23-ZU0-AAJ1 (Rev. 3.x)

NVIDIA MGX™ Server - AMD EPYC™ 9005/9004 Server Processors - 2U UP 4 x PCIe Gen5 GPUs



Key Features

- Supports up to 4 x dual-slot Gen5 GPUs
 - 4 x NVIDIA H200 NVL PCIe GPUs with 2-way NVLink bridges
 - 4 x NVIDIA RTX PRO™ 6000 Blackwell Server Edition GPUs
- NVIDIA MGX™ modular server design
- Single AMD EPYC™ 9005/9004 Server Processors
- 12-Channel DDR5 RDIMM per CPU with 12 x DIMMs
- 2 x 10 Gb/s LAN ports via Intel® X550-AT2
- 2 x 2.5" Gen5 NVMe hot-swap bays
- 2 x M.2 slots with PCIe Gen5 x4
- 4 x FHFL x16 (Gen5 x16) for GPUs
- 2 x FHFL x16 (Gen5 x16) for NVIDIA ConnectX®-7 NICs
- 1 x FHFL x16 (Gen5 x16) for NVIDIA BlueField®-3 DPUs
- 3+1 2000 W 80 PLUS Titanium redundant power supplies

Specification

Dimensions	2U (W438 x H87 x D900 mm)	I/O Ports	Front: 2 x USB 3.2 Gen1, 1 x Mini-DP, 2 x RJ45, 1 x MLAN
Motherboard	MZU3-MG0	TPM	1 x TPM header (SPI), Optional TPM 2.0 kit: CTM012
CPU	AMD EPYC™ 9005 Server Processors AMD EPYC™ 9004 Server Processors Single processor, cTDP up to 400 W - At 30°C ambient, cTDP up to 500 W	Power Supply	3+1 2000 W 80 PLUS Titanium redundant power supplies ^[1] AC Input: 100-240 V ^[1] 2+2 PSU redundancy supported for GPUs below 400 W.
OS Compatibility	OS Support List	System Management	ASPEED® AST2600 Baseboard Management Controller GIGABYTE Management Console web interface
Socket	1 x LGA 6096 (Socket SP5)	System Fans	2 x 60x60x56mm 4 x 80x80x80mm
Chipset	System on Chip	Operating Properties	Operating: 10°C to 35°C, 8% to 80% (non-condensing) Non-operating: -40°C to 60°C, 20% to 95% (non-condensing)
Memory	12-Channel DDR5 RDIMM, 12 x DIMMs [EPYC 9005] Up to 6400 MT/s [EPYC 9004] Up to 4800 MT/s	Packaging Content	1 x XV23-ZU0-AAJ1 1 x CPU heatsink 1 x Mini-DP to D-Sub cable 1 x GPU power cable (16-pin, 450mm) 1 x GPU power cable (16-pin, 550mm) 2 x GPU power cables (16-pin, 750mm) 1 x DPU power cable (2x PCIe 8pin, 520mm) 1 x 3-Section Rail kit
LAN	2 x 10 Gb/s LAN (1 x Intel® X550-AT2), Support NCSI 1 x 10/100/1000 Mb/s Management LAN	Ordering Part Numbers	6NXV23ZU0DR000ACJ1*
Video	Integrated in ASPEED® AST2600 - 1 x Mini-DP	Optional Parts	- Chassis intrusion switch: 25HA1-R28390-U1R - Cable Management Arm: 25HB2-2AA700-K0R
Storage	Front hot-swap: 2 x 2.5" Gen5 NVMe Internal M.2: 2 x M.2 (2242/2260/2280/22110), PCIe Gen5 x4		
PCIe Expansion Slots	4 x FHFL x16 (Gen5 x16), for GPUs 2 x FHFL x16 (Gen5 x16), for NICs 1 x FHFL x16 (Gen5 x16), for DPUs *The system supports 4 x NVIDIA H200 NVL PCIe GPUs at 25°C ambient, arranged as two 2-GPU sets, each with a 2-way NVLink bridge. *The system supports 4 x NVIDIA RTX PRO™ 6000 Blackwell Server Edition GPUs at 25°C ambient.		



Learn more at: <https://www.gigabyte.com/Enterprise>

* All specifications are subject to change without notice. Please visit our website for the latest information.

* All trademarks and logos are the properties of their respective holders.

© 2026 Giga Computing Technology Co., Ltd. All rights reserved.

Last updated: Jul 1, 2026

Designed by

